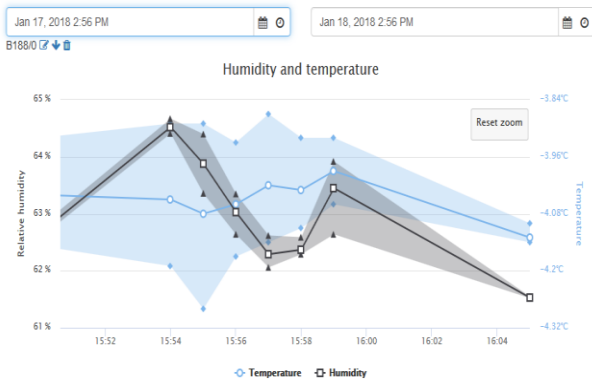


Intelligent and Powerful Aistin Cloud Solution

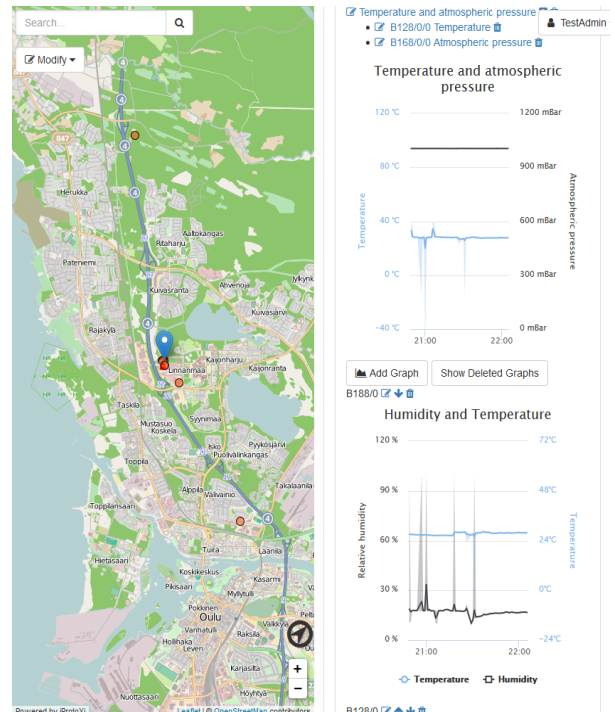
Aistin Cloud Solution can be tailored to meet your own specific requirements and needs. Cloud services are also fully supported for data visualization, user management, and device management.



Aistin Cloud Solution is used for monitoring connected devices in real time through the dashboard. Aistin Cloud Solution allows users to easily connect, manage, monitor and control different types IoT devices and sensors with different web technologies. Aistin Cloud Solution is scalable for large systems supporting numerous amount of connected devices.

CUSTOMIZABLE FOR ALL YOUR DIGITALIZATION NEEDS

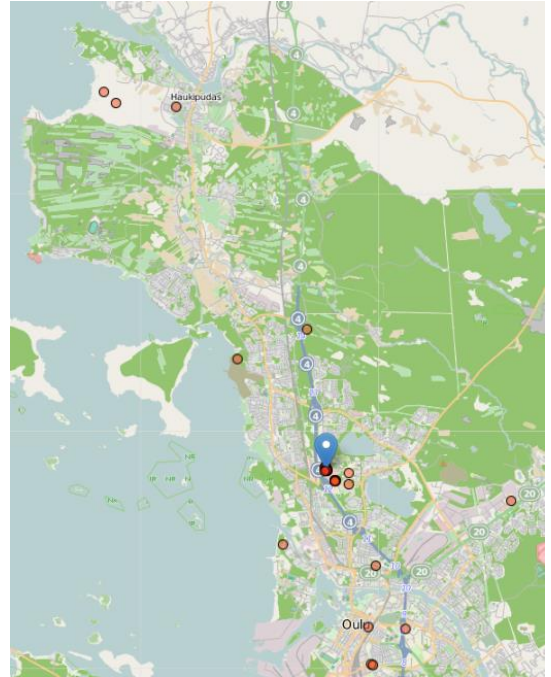
- Customizable maps with node activity indicators
 - For example, water and sewer lines
- Interfaces for automation and integration
- Selection of views and data visualizations possibilities for supporting large amount of data
 - User editable views and graphs
 - Pre-processing of data
- Possibility to display any IoT device on the map
- Data forwarding to another cloud instance



Intelligent and Powerful Aistin Cloud Solution

TECHNICAL SPECIFICATION

- Industry standard security solutions supported
- Communication to cloud is radio technology independent
 - LoRa, NB-IoT, Wifi, 4G, 5G, etc.
- Various user groups, such as admins, group admins and normal users
- Devices can be set to be visible only for specific groups
- System interfacing for AI control
- Bidirectional connection between cloud and devices
- Device management
 - Possibility to integrate any 3rd party device management system such as *SyncShield™*



update fw version	new fw version	current fw version
<input type="text"/>	<input type="text"/>	vexve_FW_0.0.3
update fw version	new fw version	current fw version



- Firmware updates by over the air (OTA)
- Device alarms visualized on the map
- Reporting of events and alarms to user with SMS and e-mail
- Exporting cloud data
- Operating System independent flexible installation
 - Cloud or self managed servers
 - Docker support
- Automatic and manual backups
- Fast and reliable databases